

Rail system
Pergola

Positano

Just
enjoy life!

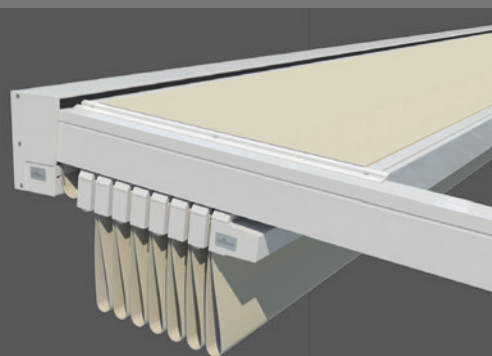

MARKISEN





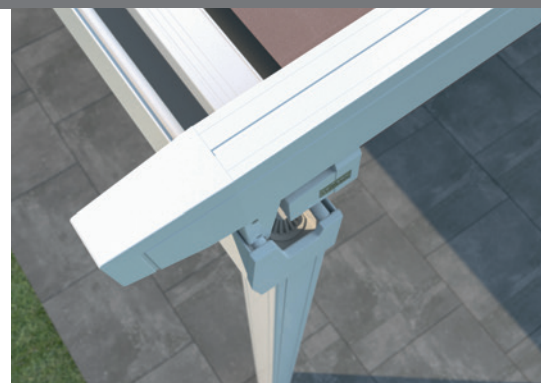
The Positano all-weather Pergola

Total relaxation, every time



Technology

High-precision **toothed belt technology** ensures smooth extension and retraction and tensioning of the fabric panels
Rainwater is drained by way of the fabric, gutter and invisibly down the inside of the posts.



Equipment

- Width, 1 unit, max. 700 cm, double unit max. 1400 cm, drop max. 600 cm, pitch max. 12° *(infinitely adjustable)*
- High-precision toothed belt technology
- Always with radio motor
- Waterproof fabric cover: Soltis Proof W96, Précontraint 302
- Options: automatic weather sensor, LED lighting *(in the fabric retainer profiles)*, radiant heater



Rainproof

A choice of two fabrics is offered for the cover: the **Soltis Proof W96** composite fabric with a textured, transparent look and the opaque, PVC-coated polyester fabric **Précontraint 302** with a smooth, dirt-repellent finish.

Both fabrics give waterproof weather protection, maximum UV protection and high heat reflection, creating a pleasant climate.



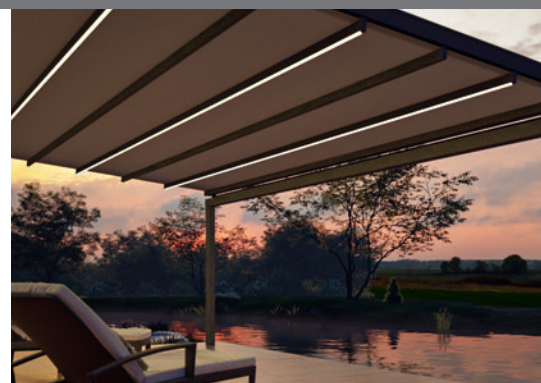
The Positano all-weather pergola offers a level of comfort and features to satisfy the highest demands. This awning with its rainproof cover provides adjustable protection from the elements for generously dimensioned patios of up to 42 m² in size. The perfect complement: Glissando sliding glass elements and Finestra permanent glazing from Lewens' Murano series along with the Micro 2020 vertical screen awning for a perfectly fitting sunshade and privacy screen at the front.

Best Product Design Award



LED lighting (option)

To create mood lighting on the patio, the Positano can be fitted with LED strips in the fabric retainer profiles, with optional remote control and integration into the home automation system.



Positano

Equipment and technical features



Pergola



Manufactured and assembled
in Germany



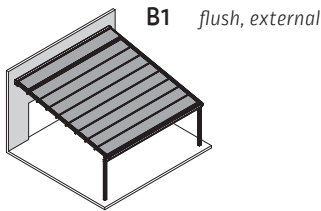
EN 13561

Quality and technology
CE-compliant

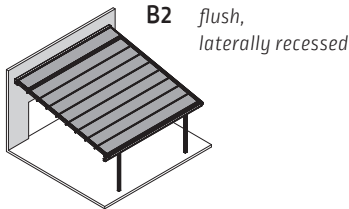
Recipient of the



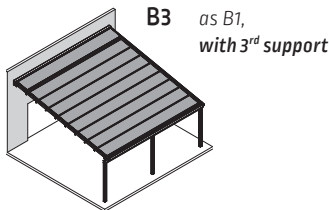
Styles



B1 flush, external



B2 flush,
laterally recessed



B3 as B1,
with 3rd support

Type/styles	Flush (B) Type
– Posts laterally external	B1
– Posts laterally recessed	B2
– with 3rd support	B3
Dimensions (max.)	
Width, 1 unit (single panel; central rail if over 601 cm)	700 cm
Width, 2 units (double unit: 2 cassettes, 2 motors, 4 guide tracks, 3 posts)	1.400 cm
Depth (central rail if over 501 cm)	600 cm
Pitch angle, stepless (at least 5° recommended)	3° - 12°
Post height 240 cm	■
Longer posts	□
Rainwater drainage	
Downpipe integrated into post	■
Drive	
Radio motor	■
Frame colours	
29 Lewens standard frame colours	■
Additional RAL, special colours and effect finishes	□
Awning fabrics from the LEWENS collection	
Soltis Proof W 96 (welded seams)	■
Précontraint 302 (welded seams)	■
Options	
1 Automatic weather sensor (sun, wind, rain)	□
2 Lighting - integral LED strips (every 2nd fabric retainer profile)	□
3 Radiant heater (only wall attachment)	□
Complementary products	
Murano Glissando (sliding glass elements)	□
Murano Finestra (permanent glazing)	□
Micro 2020 (vertical awning: attached behind or below the gutter)	□
Attachment	
Wall mounting (wall profile inclusive) + front posts (foundations provided on site)	■
Note	
Due to the design and the weight of the awning fabric, the fabric may sag in the middle on large awning sizes. However, this has no effect on the operation and / or service life of the awning.	

■ Standard □ Option

Possible dimensions and restrictions along with the complete range of electronic accessories can be found in the technical data in the current Lewens price list.

Your stockist will be happy to advise you:

Lewens
MARKISEN



www.lewens-markisen.de

Subject to technical alterations. Date: 01/2024